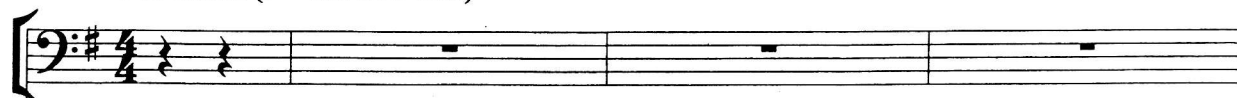


from *The Rocky Horror Picture Show*

# WHATEVER HAPPENED TO SATURDAY NIGHT

for S.A.T.B. voices and piano  
with optional SoundTrax CD\*Arranged by  
ALAN BILLINGSLEYWords and Music by  
RICHARD O'BRIEN

'50s Rock (♩ = ca. 160-168)

TENOR  
BASS

'50s Rock (♩ = ca. 160-168)

PIANO



4

[5] *mf* opt. SOLO

What - ev - er hap - pened to Sat - ur - day night, \_\_\_\_\_

Em



7



when you dressed up sharp and you felt al - right? \_\_\_\_\_ It

G

Em

\* Also available for S.A.B. (35848).  
SoundTrax CD available (35849).

© 1974 (Renewed) DRUIDCREST MUSIC LIMITED  
All Rights Administered by WIXEN MUSIC PUBLISHING, INC.  
This Arrangement © 2011 DRUIDCREST MUSIC LIMITED  
All Rights Reserved. Used by Permission. Printed in USA.

Sole Selling Agent for This Arrangement: Alfred Music Publishing Co., Inc.

To purchase a full-length performance recording of this piece, go to [alfred.com/downloads](http://alfred.com/downloads)

9

don't seem the same — since cos - mic light came in - to my life, — I

C D C

12

(end solo) 13

thought I was di - vine. — I used to go for a ride with a

D G

14

chick who'd go. — I'd lis - ten to the mu - sic on the ra - di - o. — A

Em G Em

17

sax - o - phone was blow - in' on a rock and roll show, you

C D

climbed in the back seat, you real-ly had a good time.\_\_\_\_\_

22 **SOPRANO** *f*

**ALTO**

Hot pa-too-tie, bless my soul, I real-ly love that—

**TENOR** *f*

**BASS**

*f*

G A C

25

rock and roll. Hot pa-too-tie, bless my soul,—

G A

28

I real-ly love that rock and roll.

C G G

*ff*

31

A C G

34

36

*mf* (S/A harmony optional mm 36-44)

Oo

*mf*

Get back in front and put some

Em G

*mf*

37

— wah wah wah oo — wah wah wah

hair oil on. — Bud - dy Hol - ly was sing - in' his ver - y last song. With your

Em G Em

40

oo wah wah wah wah

arms a - round your girl you try to sing a - long. — You

C D

42

oo. You real-ly had a good time. —

felt pret-ty good, — whew! You real-ly had a good time. —

C D

45

*f*

Hot pa-too-tie, bless my soul,— I real-ly love that—

*f*

G A C

48

rock and roll.— Hot pa-too-tie, bless my soul,—

G A

51

I real-ly love that— rock and roll.—

C G G

*ff*

54

A C G Eb

57

SMALL GROUP

(2nd time only)

*f*

Bless my soul! —

S. *f*

A. Hot pa-too-tie, bless my soul, — I real-ly love that —

T. *f*

B. *f*

Ab Bb Db

*f*



60

Rock and roll! \_\_\_\_ Bless my soul!\_

rock and roll. \_\_\_\_ Hot pa-too-tie, bless my soul, \_

Ab Bb

This system contains measures 60, 61, and 62. It features a vocal line, a piano accompaniment with two staves, and a grand piano section. The vocal line has lyrics: "Rock and roll! \_\_\_\_ Bless my soul!\_". The piano accompaniment has lyrics: "rock and roll. \_\_\_\_ Hot pa-too-tie, bless my soul, \_". The grand piano section has a treble clef staff with chords and a bass clef staff with a walking bass line. Chord changes are marked as Ab and Bb.

63

\_\_\_\_ Rock and roll! \_\_\_\_

I real - ly love that \_\_\_\_ rock and roll. \_\_\_\_

Db Ab

This system contains measures 63 and 64. It features a vocal line, a piano accompaniment with two staves, and a grand piano section. The vocal line has lyrics: "\_\_\_\_ Rock and roll! \_\_\_\_". The piano accompaniment has lyrics: "I real - ly love that \_\_\_\_ rock and roll. \_\_\_\_". The grand piano section has a treble clef staff with chords and a bass clef staff with a walking bass line. Chord changes are marked as Db and Ab.



65

Hot pa-too-tie, bless my soul,— I real-ly love that—

A♭ B♭ D♭

68

Rock and roll!—

rock and roll.— Hot pa-too-tie, bless my soul,—

A♭ B♭

71

1. 2.

Rock and roll! — Rock and roll! —

I real-ly love that — rock and roll. — rock and roll! —

Db Ab Ab

This musical system contains measures 71, 72, and 73. It features a vocal line with lyrics and a piano accompaniment. The key signature has three flats (B-flat, E-flat, A-flat). Measure 71 has a first ending (1.) and a second ending (2.). Measure 72 continues the vocal line. Measure 73 has a first ending (1.) and a second ending (2.). The piano accompaniment includes chords and a bass line. The lyrics are: "Rock and roll! — Rock and roll! —" and "I real-ly love that — rock and roll. — rock and roll! —". The piano part has a Db chord in measure 71, and Ab chords in measures 72 and 73.

74

8va gliss

This musical system contains measures 74, 75, and 76. It features a vocal line and a piano accompaniment. The key signature has three flats (B-flat, E-flat, A-flat). Measure 74 has a first ending (1.) and a second ending (2.). Measure 75 continues the vocal line. Measure 76 has a first ending (1.) and a second ending (2.). The piano accompaniment includes chords and a bass line. The lyrics are: "Rock and roll! — Rock and roll! —" and "I real-ly love that — rock and roll. — rock and roll! —". The piano part has a Db chord in measure 74, and Ab chords in measures 75 and 76. The lyrics are: "Rock and roll! — Rock and roll! —" and "I real-ly love that — rock and roll. — rock and roll! —". The piano part has a Db chord in measure 74, and Ab chords in measures 75 and 76. The lyrics are: "Rock and roll! — Rock and roll! —" and "I real-ly love that — rock and roll. — rock and roll! —". The piano part has a Db chord in measure 74, and Ab chords in measures 75 and 76.